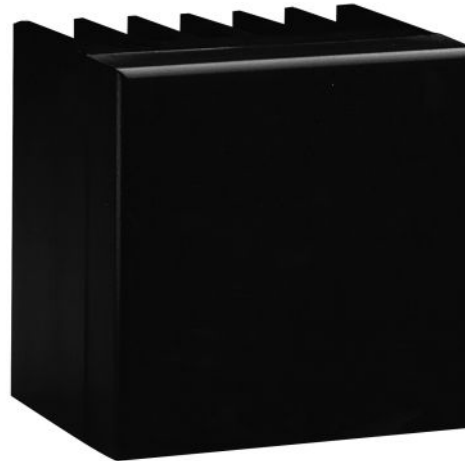


# WFL-II/LED15-12

Home | Security | Lighting | Infrared

WFL-II/LED15-12  
LED Infrared Illuminator 950nm, Wide Flood, 15W,  
12VDC

**Art-Nr. 73826**



## Main Features

<b>Power rating: 15W</b>	<b>Protection rating: IP66</b>
<b>Spectral emission: 950nm</b>	<b>Vibration-resistant</b>
<b>Narrow-band light emission</b>	<b>Low self-heating</b>
<b>Beam angle: 40°</b>	<b>No maintenance required</b>

## Specifications

<b>Lamp type</b>	LED
<b>Spectral emission</b>	950 nm
<b>Spectral half-value range</b>	80nm
<b>Angle of light source h</b>	40°
<b>Scene coverage</b>	15 m
<b>75% reduced light emission after</b>	>100,000h
<b>Twilight switch</b>	optional
<b>Heating above ambient air temperature</b>	Max. 35°C
<b>Power supply unit</b>	optional
<b>Protection rating</b>	IP66
<b>Supply voltage</b>	12VDC
<b>Power consumption</b>	15W
<b>Temperature range (operation)</b>	-30°C ~+50°C
<b>Housing</b>	Aluminium with plastic cover
<b>Dimensions (HxWxD)</b>	66x66x55 mm

## WFL-II/LED15-12

(Continuation Specifications)

<b>Weight</b>	350g
---------------	------

### Optional accessories

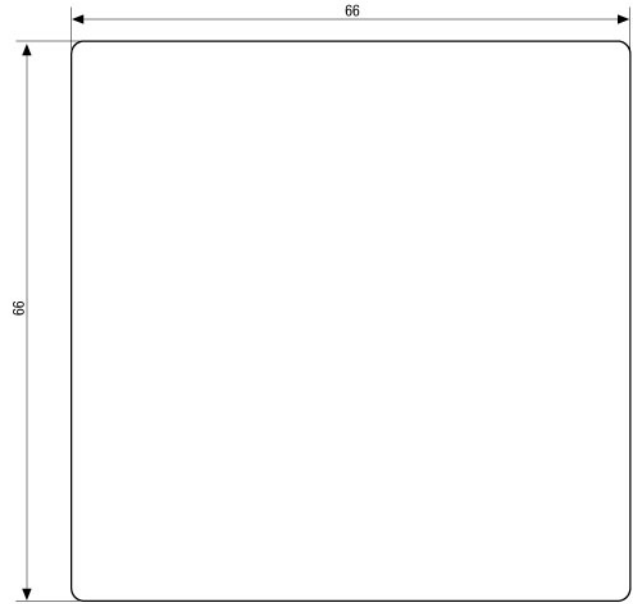
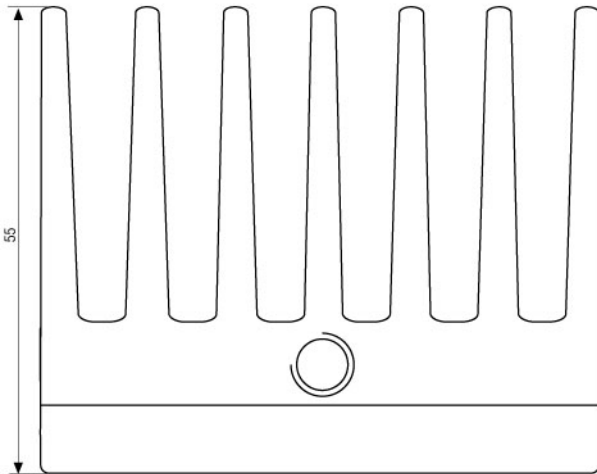
<b>71310</b>	<b>WD-8/MK</b>	Wall Mount with Swivel Head, 1/4" Camera Fixing Screw, Black Finish
<b>70023</b>	<b>WD-9N</b>	Wall Mount with Ball Joint, 1/4" Camera Fixing Screw, Black Finish
<b>73827</b>	<b>NE-109N</b>	Power Supply 110-240VAC/12VDC for one LED-Infrared Illuminator 15W, Regulated

# WFL-II/LED15-12

## Product information

The best result will be achieved on condition that a camera is used with good sensitivity in the infra-red range, a relative lens aperture of F1.4 min. and a mean reflectance factor for spotlight objects.

## Technical drawing



Befestigungsgewinde 1/4"  
Fixing thread 1/4"

Maße/Dimensions: mm

SLD Security & Communications  
The Old Forge, Ockham Lane, Ockham, Surrey GU236PH England  
Phone +44.1483225633 · Fax +44.1483225634  
sales@sld.co.uk · www.sld.co.uk

