

VTL-WWA

Home | Security | Housings | for Boxed Cameras

VTL-WWA

Weatherproof Housing (300mm) with Heater Thermostat,

Wallbracket, RAL9002, 230VAC

Art-Nr. 79488



SLD Security &
Communications

Main Features

Camera Weatherprotection
Integrated Wall Bracket
Fold-down Housing Body
Insulated Camera Mounting
Housing Body Length: 300mm

Cable Entry Through the Wall Bracket
230V Window Heater Included
Protection Rating: IP66
Varnished: RAL9002

Specifications

Series	eneo VTL
Maximum installation length	300
Clear Shield	no
Window heater	yes, 100~240V/40W (PTC)
Blower	optional
Wiper	no
Supply voltage	100~240VAC
Sunshield	yes
Hidden cable management	yes
Cable entry	Through the wall bracket
Integrated wall mount	yes
Protection rating	IP66
Housing	Outdoor
Housing material	Aluminium

VTL-WWA

(Continuation Specifications)

Colour (housing)	RAL9002
Dimensions (HxWxD)	See drawing
Weight	4.0kg

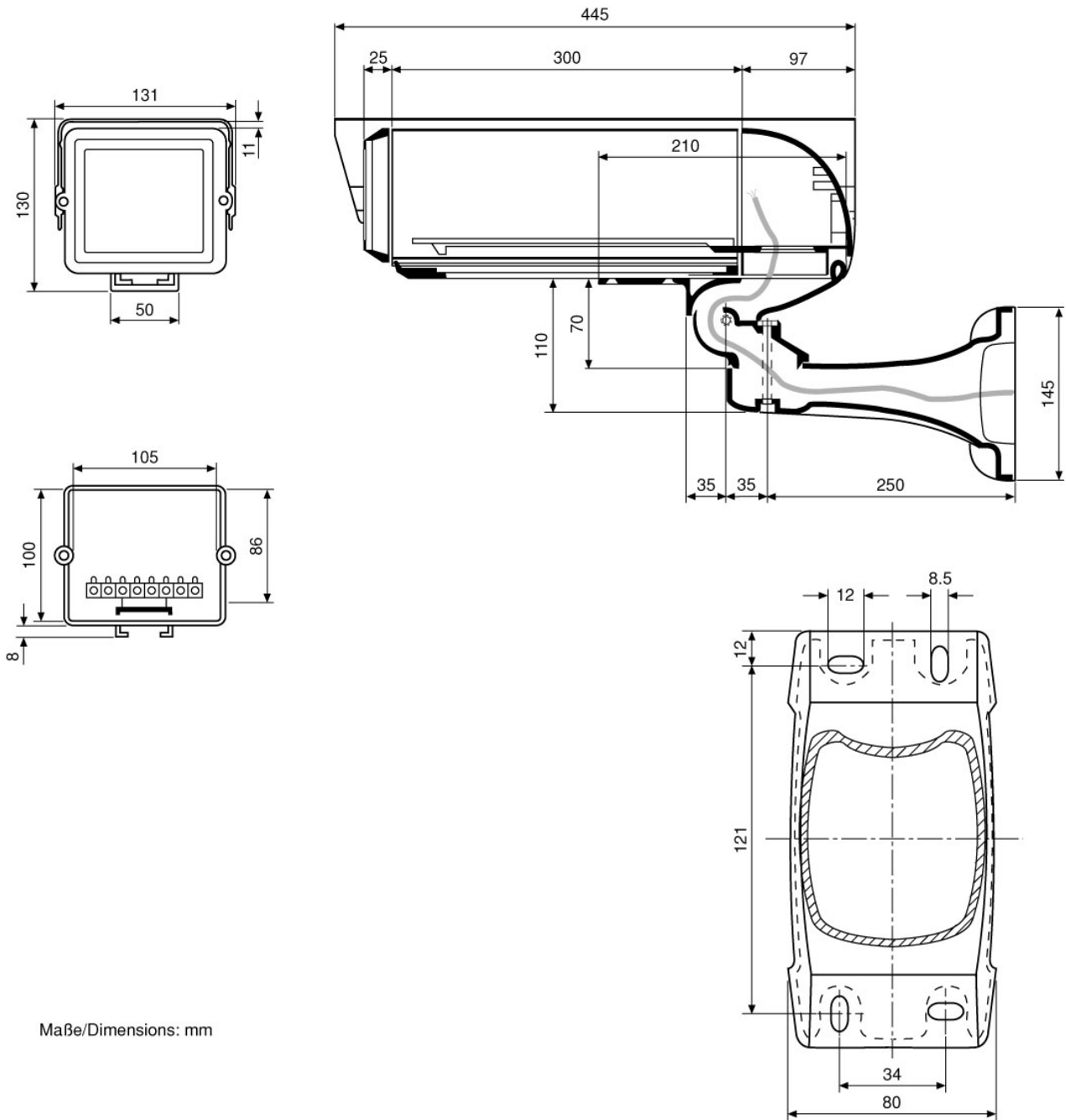
Optional accessories

79592	PM-6S	Pole Mount Adapter for 1 Wall Mount, (50-140mm Pole), RAL9002
70457	AK-3	Camera Connection box, 230VAC Input, 24VAC-3.2A, 12VDC-1A Outputs
79593	PM-6D	Pole Mount Adapter for 2 Wall Mounts, (50-140mm Pole), RAL9002
79662	NE-130/12V	Power Supply Unit 230V/12VDC-1.25A for Housings VTL-WWA
79613	CMA-2	Corner Mount Adapter for Wall Brackets WD-5, WD-7, VTL-WW, VHK-WW, RAL9002

VTL-WWA

Home | Security | Housings | for Boxed Cameras

Technical drawing



Maße/Dimensions: mm

SLD Security & Communications
The Old Forge, Ockham Lane, Ockham, Surrey GU236PH England
Phone +44.1483225633 · Fax +44.1483225634
sales@sld.co.uk · www.sld.co.uk

