

# VTL-WWD

Home | Security | Housings | for Boxed Cameras

VTL-WWD  
Weatherproof Housing (300mm) RAL9002, Wallbracket,  
Thermostat, Heater 12-24V

**Art-Nr. 79644**



## Main Features

<b>Camera Weatherprotection</b>	<b>Cable Entry Through the Wall Bracket</b>
<b>Integrated Wall Bracket</b>	<b>PTC Sscreen Heater 12-24V</b>
<b>Fold-down Housing Body</b>	<b>Protection Rating IP66</b>
<b>Insulated Camera Mounting</b>	<b>Housing Surface RAL9002</b>
<b>Max. Installation Length 300mm</b>	

## Specifications

<b>Series</b>	eneo VTL
<b>Maximum installation length</b>	300
<b>Clear Shield</b>	no
<b>Window heater</b>	yes, 12~24V/20watts (PTC)
<b>Blower</b>	optional
<b>Wiper</b>	no
<b>Supply voltage</b>	12~24V
<b>Sunshield</b>	yes
<b>Hidden cable management</b>	yes
<b>Cable entry</b>	Through the wall bracket
<b>Integrated wall mount</b>	yes
<b>Protection rating</b>	IP66
<b>Housing</b>	Outdoor
<b>Housing material</b>	Aluminium

# VTL-WWD

(Continuation Specifications)

<b>Colour (housing)</b>	RAL9002
<b>Dimensions (HxWxD)</b>	See drawing
<b>Weight</b>	4.0kg

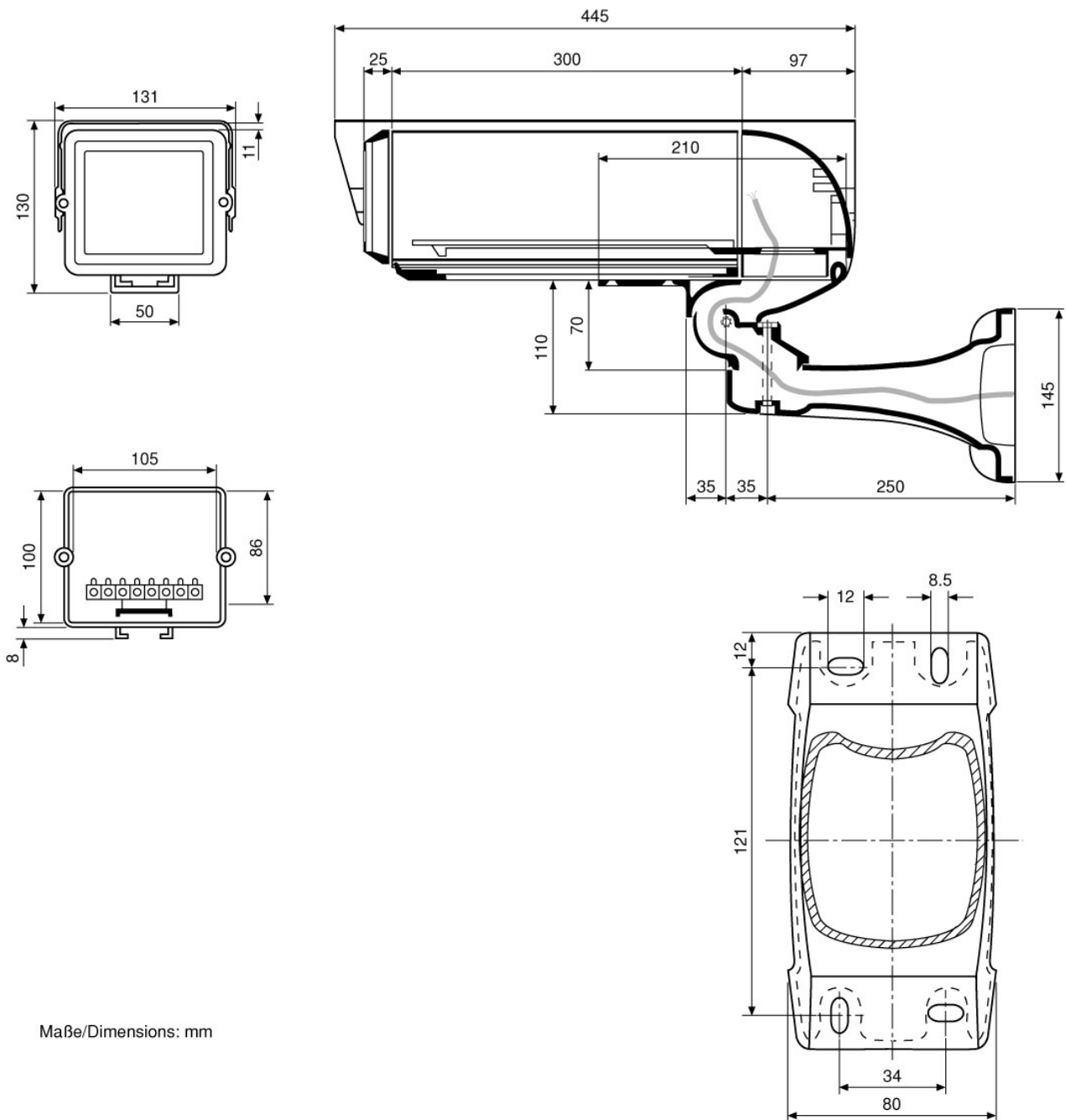
## Optional accessories

<b>79592</b>	<b>PM-6S</b>	Pole Mount Adapter for 1 Wall Mount, (50-140mm Pole), RAL9002
<b>70457</b>	<b>AK-3</b>	Camera Connection box, 230VAC Input, 24VAC-3.2A, 12VDC-1A Outputs
<b>79593</b>	<b>PM-6D</b>	Pole Mount Adapter for 2 Wall Mounts, (50-140mm Pole), RAL9002
<b>79613</b>	<b>CMA-2</b>	Corner Mount Adapter for Wall Brackets WD-5, WD-7, VTL-WW, VHK-WW, RAL9002

# VTL-WWD

Home | Security | Housings | for Boxed Cameras

## Technical drawing



Maße/Dimensions: mm

SLD Security & Communications  
The Old Forge, Ockham Lane, Ockham, Surrey GU236PH England  
Phone +44.1483225633 · Fax +44.1483225634  
sales@sld.co.uk · www.sld.co.uk

