

VMC-10.4LCD-CP

Home | Security | Monitors | TFT/LCD

VMC-10.4LCD-CP
10.4"(26.4cm) LCD/TFT Monitor, 800x600, 12VDC,

Pedestal, silvergrey

Art-Nr. 90438



SLD Security &
Communications

Main Features

10.4"(26.4cm) Display Screen Size
PAL/NTSC Auto Selection
Multi language on-screen menu control
Resolution of 800x600 Pixels
CVBS, S-Video, RGB and Audio Inputs

Built-in loudspeaker
Angled monitor stand included
Supply Voltage: 12VDC
Robust plastic cabinet
Different Ranges of Applications

Specifications

Video standard	PAL, NTSC (Auto detection)
Scanning frequency range (H)	15.63 ~15.73kHz
Scanning frequency range (V)	50 ~60Hz
Synchronization	TTL Separate, Composite
Display element	Colour TFT/LCD, Total no. of pixels: 480 000
Screen size	10.4"
Screen Size (cm)	26.4 cm
Active area	211.7 (H) x 158.4 (V) mm
Pixel format	800 (H) x 600 (V) 0.264x0.264mm
Pixel fault class	ISO 13406-2, Class II
Horizontal resolution	approx. 420 TV lines (CVBS)
Resolution pixels	800 x 600
Colour scales	262,144 (6bit)
Contrast ratio typical	400:1

VMC-10.4LCD-CP

(Continuation Specifications)

Brightness typical	220 cd/m ²
Viewing angle vertical	80°
Viewing angle horizontal	110°
Response time typical	45 ms, 45ms (tr: 15 / tf: 30)
PC interfaces	RGB, VESA standard: VGA to SVGA, 15-pin
Input signals	Composite video, S-VHS, RGB (switchable), Audio
Video inputs (type)	Y/C, VGA, composite (CVBS)
Video inputs	CVBS: 1Vp-p, 75ohms, Cinch Y/C: Y= 0.7Vp-p, C= 0.3Vp-p, 75ohms, 4-pin MiniDIN
Audio inputs	1, Mono input, 400mVrms
Loudspeaker	0.5watts
Menu languages	English, German, French, Spanish, Italian, Korean, Japanese
Supply voltage	12VDC +/-5% (Power supply unit included)
Power consumption	9.6watts max.
External adjustments	On/Off, Menu, Mode, Cursor
Temperature range (operation)	0°C ~+50°C
Housing material	plastic
Mount	Angled stand and 4x threads M3, 50x55mm, for wall mounting (see drawing)
Colour (housing)	silver grey
Colour	Silver Metallic
Dimensions (HxWxD)	see drawing
Weight	1.5kg
Parts supplied	Monitor stand, PSU 100~240V/12VDC with power cord, Multiple connection cable (S-Video IN, Power IN, CVBS IN, Audio IN), VGA cable, Cigarette lighter adapter cable, AV adapter cable, Cinch/BNC adapter, IR remote control unit, Multiple language manual
Certificates	CE

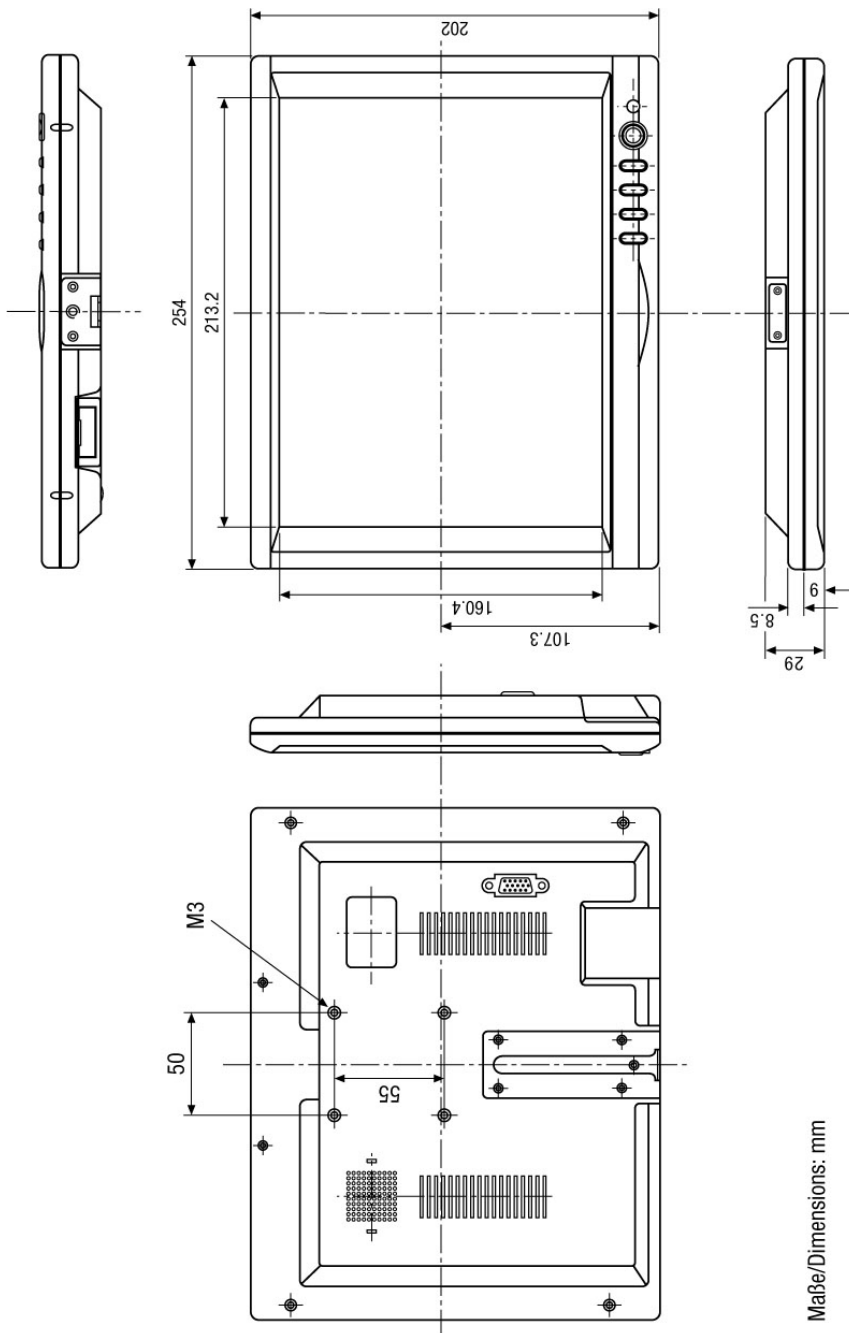
Optional accessories

90453	VMC-LCD/8-10MP	Adapter Plate for Wall Bracket Fixing to VMC-8/8.4/10.4LCD-CP Series
90394	VMC-LCD/WCMB-1	Wall/Ceiling Bracket for LCD Monitors 15"/17"/19" P/CP/CM/HPC/HMC1 Series
90426	VMC-LCD/WMB-1	Wall Bracket for TFT/LCD Monitors, straight

VMC-10.4LCD-CP

Home | Security | Monitors | TFT/LCD

Technical drawing



SLD Security & Communications
The Old Forge, Ockham Lane, Ockham, Surrey GU236PH England
Phone +44.1483225633 · Fax +44.1483225634
sales@sld.co.uk · www.sld.co.uk

